

*Singita*

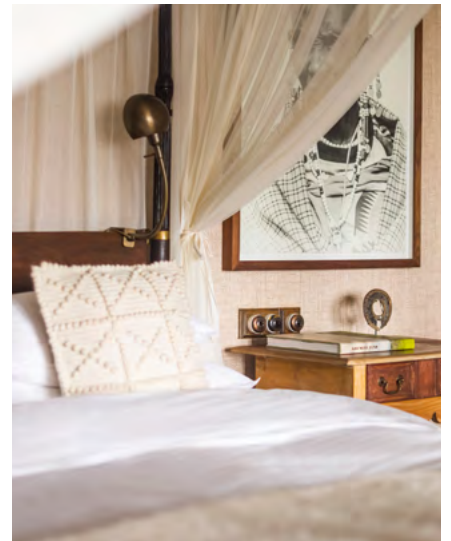
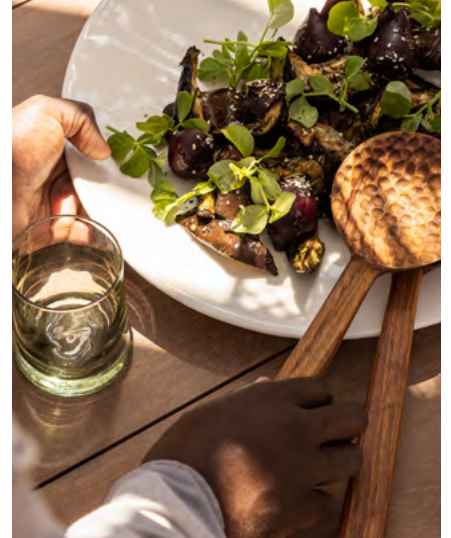
A SMOOTH JOURNEY FROM START TO FINISH

Tanzania





# Welcome to Singita's award-winning lodges & camps in Tanzania



Please ensure you read through this document before your trip as it contains important information about travelling to Tanzania for a Singita safari.

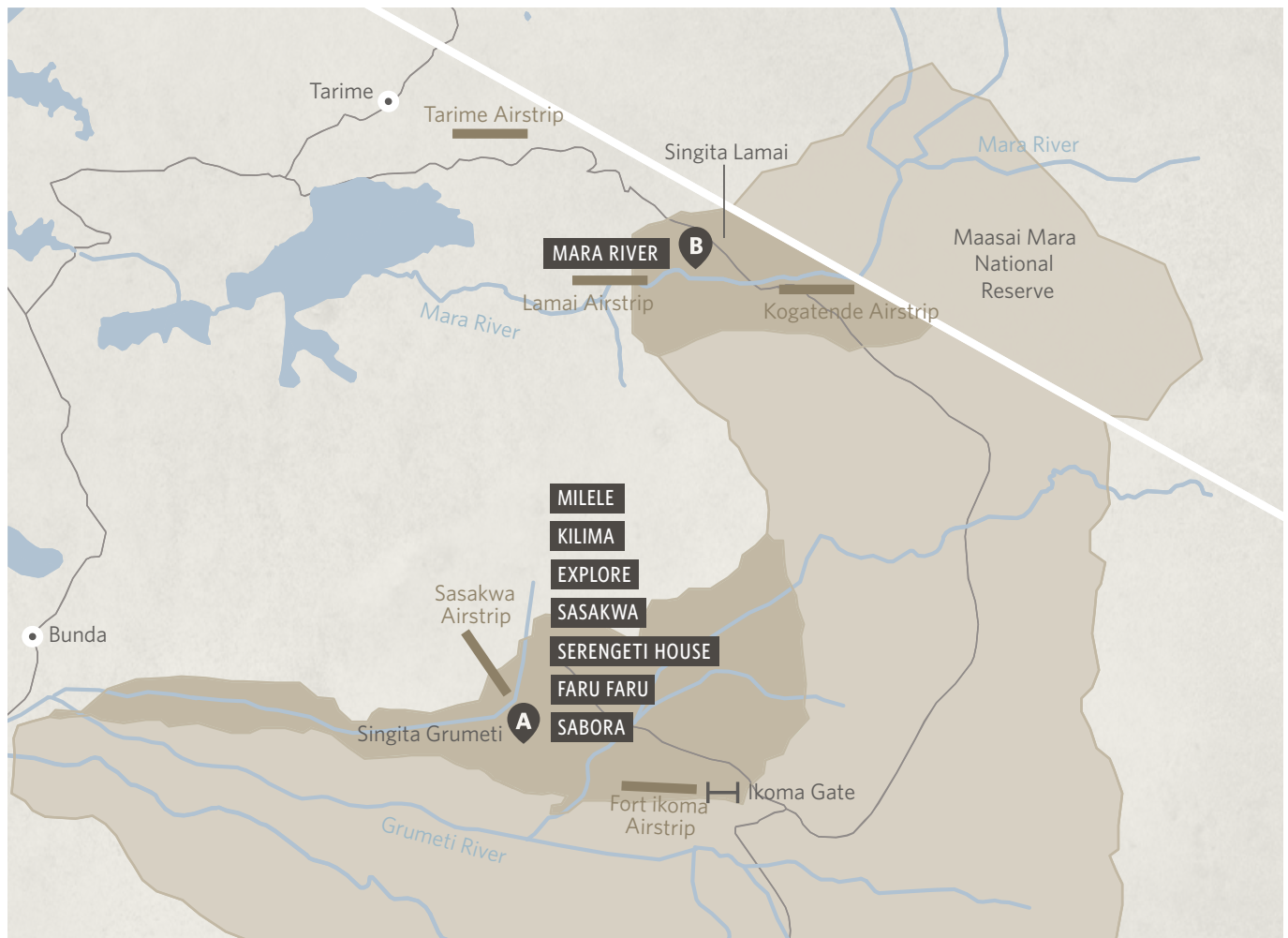
# Contents

REGIONS & RESERVES	4
PASSPORTS	5
VISAS	5
TRAVEL INSURANCE	5
HEALTH REQUIREMENTS	5
BAGGAGE INFORMATION	6
WHAT TO PACK	7
WEATHER AND SEASONS	8
GRATUITY GUIDELINES	9
WILDLIFE	9
ELECTRICITY	10
COMMUNICATION & TECHNOLOGY	10





# Regions & reserves



## Singita Grumeti (A)

Spanning over 350,000 acres of untouched wilderness, Singita Grumeti is located in northern Tanzania, forming part of the Serengeti Mara ecosystem. Singita Grumeti offers visitors a front-row seat to the Great Migration as well as countless other wildlife experiences all year around. With a landscape that combines grassy plains with riverine forests and thorny scrubland, the area is home to a huge variety and vast number of big game and other iconic African animals.

## Singita Lamai (B)

Spanning over 98,000 acres of untouched wilderness, Singita Lamai is located in northern Tanzania, bordering the Maasai Mara National Reserve. Singita Mara River Tented Camp is ideally positioned on the renowned migratory route traversed annually by more than a million wildebeest.

# Passports

All visitors to Tanzania require a passport valid for six months from date of entry. For each entry into Tanzania, the passport must have at least one completely blank page (not including the final page or endorsement pages).

**You may be refused entry if these conditions are not met.**

# Visas

Many nationalities visiting Tanzania require a visa. We strongly encourage all guests entering Tanzania to obtain their visas online [here](#) before arriving in Tanzania. E-visas can take 2 to 3 weeks to be issued. Alternatively, visas for some nationalities may be obtained on arrival (USD 50) at main entry points in Tanzania. American passport holders require a multiple entry visa (USD 100).

**Please ensure that you check the entry requirements for the passport you will be travelling on in advance of your departure.**

## IF TRANSITTING THROUGH KENYA:

Non-resident travellers must acquire an **electronic travel authorization** (eTA) at least 5 days before travel. (Processing time is 3 working days but, in some cases, may take longer). The cost is USD 30 for all travellers.

We strongly recommend that all guests, including those in transit through Kenya, obtain the eTA.

**All travellers will need the below to complete the eTA:**

- Valid passport for at least six (6) months after your planned date of arrival into Kenya, with at least one blank page
- Selfie or passport-type photo
- Contact information, email address and phone number
- Details of your arrival and departure itinerary
- Accommodation booking confirmation(s)
- Credit card, debit card or other means of payment

# Travel insurance

In order to protect your investment, we strongly encourage our guests to take out sufficient travel insurance as Singita does not take on the liabilities and risks associated with travel and cannot be held liable for delays, cancellations, or trip interruptions. We recommend the services of **Global Rescue**. Please note that Global Rescue is an independent third-party service provider and Singita accepts no liability in terms of the services rendered.

All travellers are required to have a **mandatory insurance** when travelling to Zanzibar.

# Health requirements

## Malaria

Singita's lodges in Tanzania are situated in a malaria-risk area. It is therefore essential that you consult your doctor or a travel clinic regarding antimalaria requirements prior to your visit.

## Yellow Fever

Tanzania requires a valid yellow fever certificate for all travellers journeying from yellow fever risk countries, including Kenya.

Rwanda, previously listed as a yellow fever endemic country, is now considered low-risk and is no longer on the watch list. However, travellers are still advised to carry a yellow fever certificate if travelling through Rwanda.

## Travel vaccinations

Please consult your doctor or a travel clinic prior to your trip for advice on further vaccinations recommended for travel in Tanzania.



## Grumeti Air and other internal flights - baggage information for flights

All passengers travelling on Grumeti Air flights are entitled to one free piece of checked luggage and one small carry on item.

Due to the limited space in the luggage hold and safety regulations, we are restricted by weight and size limitations. **All luggage must be in soft-sided duffel bags.**

### NO PLASTIC BAGS:

Effective 1st June 2019: All travellers, including tourists, arriving at any East African airport may face heavy fines for using plastic bags in any way, shape or form. Visitors, Citizens and Residents are advised to avoid packing any plastic bags in their suitcases or carry-on luggage before flying to East Africa.

### TYPE OF BAG:

- Due to the limited space in the luggage hold and safety regulations, we are restricted by weight and size limitations.

### LUGGAGE SPECIFICATIONS:

- Soft luggage or duffel bags with no rigid sides (flexible bags made from pliable material such as cotton or canvas)
- Maximum luggage weight allowance is 15kg/34lbs (in the hold)
- Maximum hand luggage is 5kgs/11lbs (1 piece allowed); inclusive of cameras

### PLEASE NOTE:

If your luggage exceeds the above limitations, they will not be able to load it. There is an option to store luggage at Singita Arusha for a fee, providing logistics work with connecting flights.

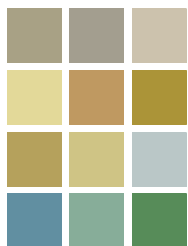
Please ask your Travel Advisor for additional options on excess luggage.



# What to pack

Neutral tones and light colours are best for game drives and bush walks (these allow you to blend in to the surroundings and ensure minimal disturbance to the wildlife, and thus more natural wildlife behaviour and an enhanced game-viewing experience). Game drives take place in the early morning and late afternoon – it can cool down significantly before the sun rises and after it sets, so we recommend layering clothing to account for varying temperatures over the course of the day. Formal wear is not required at any of our lodges – you are welcome to come straight from a game drive into drinks and dinner. Laundry, including ironing, is complimentary at Singita lodges to assist with packing lightly (please note luggage restrictions on [page 6](#) in this document).

## SINGITA INSPIRED COLOUR PALETTE



## Suggested packing guide

- Shorts, t-shirts, summer dresses for during the day (light, natural fabrics like cotton and linen are recommended)
- Long trousers, long-sleeved vests and a warm jacket for early mornings and evenings
- Woollen hat/beanie, gloves and scarf for winter months
- Comfortable walking shoes and socks
- Sandals or flip-flops for during the day at the lodge and closed shoes or sneakers for evenings
- Swimwear
- Sun hat
- Sunglasses
- Camera, video camera, binoculars, spare memory cards and charging equipment
- Spare contact lenses/glasses and contact lens solution
- Medication (the remote nature of the lodges means that anything beyond First Aid supplies won't be available on site)



## Amenities provided in all Singita suites

- Shampoo and conditioner
- Body wash
- Body lotion
- Hairdryer
- Sunscreen
- Insect repellent
- Sun hat
- Rain poncho
- One set of binoculars per room



# Weather and seasons

## October – April:

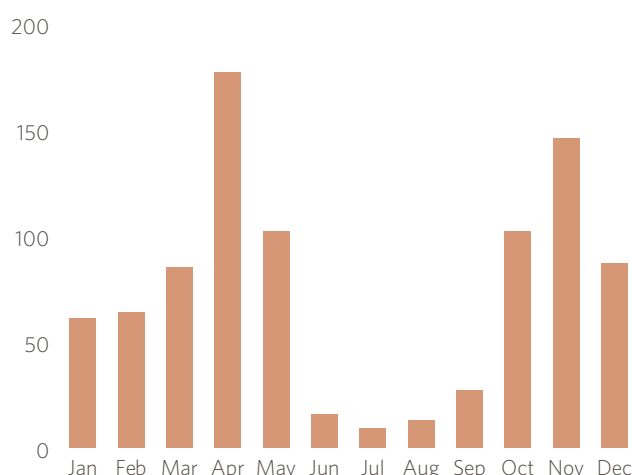
Casual summer clothing (shorts and lightweight shirts) with a warm jersey or sweater for the cooler mornings and evenings.

## May – September:

Casual lightweight clothing with a warm parka or windbreaker jacket for the very cold mornings and nights.

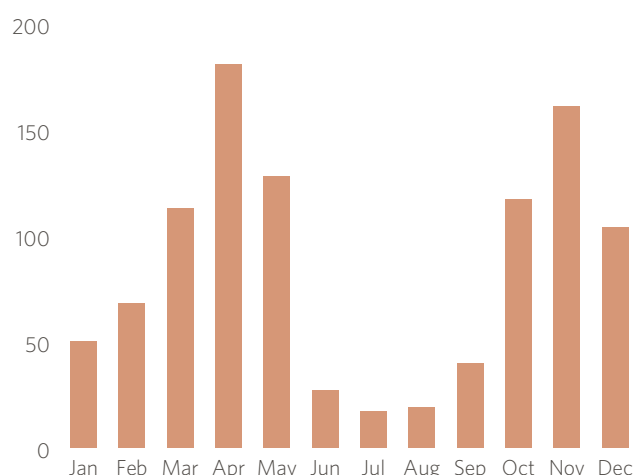
### SINGITA GRUMETI

#### AVERAGE MONTHLY RAINFALL (MM)



### SINGITA LAMAI

#### AVERAGE MONTHLY RAINFALL (MM)



### SINGITA GRUMETI AVERAGE SEASONAL TEMPERATURE RANGES

#### SPRING

(Sept – Nov)

Low 20 °C / 68 °F

High 30 °C / 86 °F

#### SUMMER

(Dec – Feb)

Low 23 °C / 73 °F

High 31 °C / 88 °F

#### AUTUMN

(March – May)

Low 22 °C / 72 °F

High 31 °C / 88 °F

#### WINTER

(June – Aug)

Low 18 °C / 64 °F

High 29 °C / 84 °F

### SINGITA LAMAI AVERAGE SEASONAL TEMPERATURE RANGES

#### SPRING

(Sept – Nov)

Low 18 °C / 64 °F

High 32 °C / 89 °F

#### SUMMER

(Dec – Feb)

Low 20 °C / 68 °F

High 33 °C / 91 °F

#### AUTUMN

(March – May)

Low 20 °C / 68 °F

High 30 °C / 86 °F

#### WINTER

(June – Aug)

Low 16 °C / 60 °F

High 25 °C / 77 °F

The above temperatures are monthly averages. The actual daily temperatures and rainfall may differ from these.





## Wildlife

You will be briefed upon arrival at each property as to the specific safety precautions, but please be mindful that you are in a natural environment in which animals roam freely, so you may encounter potentially dangerous animals on foot or around the lodge. In this case, please remain calm and follow instruction from the staff. The team at Singita are highly trained and experienced in handling such situations.

## Gratuuity guidelines

Tipping cultures differ from country to country. Whilst staff at Singita do not expect or rely on gratuities from guests, you may wish to leave a discretionary token of appreciation; either cash or a nominated amount added to your bill. Tips from the general staff gratuity pool are divided equally amongst chefs, housekeepers, porters, front of house and back of house staff. Should you wish to allocate a gratuity to a particular staff member, it is helpful if this is specified.

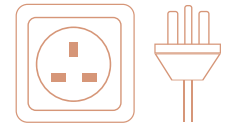
All Singita properties accept Visa, MasterCard, and American Express.

POSITION	AMOUNT
Field Guide	From USD 55 per couple per day
Waiter	From USD 45 per couple per day
Wellness Therapist	10% of treatment cost
General staff gratuity pool	From USD 55 per couple per day



# Electricity

All of the suites at Singita have multiple plug points in rooms for charging including EU, UK, North America and USB. Tanzania uses type G (standard UK plug) power outlets and plugs.



TYPE G

## Communication & technology

Complimentary internet access is available at all Singita lodges and camps in Tanzania, however due to the remote locations, the connection can be slow and intermittent. Mobile phone coverage in the reserve is only available in certain areas.

If you do need to be connected, please be mindful of other guests who choose to switch off. We ask that you keep mobile phones on silent and refrain from use around other guests in communal lodge areas.

