

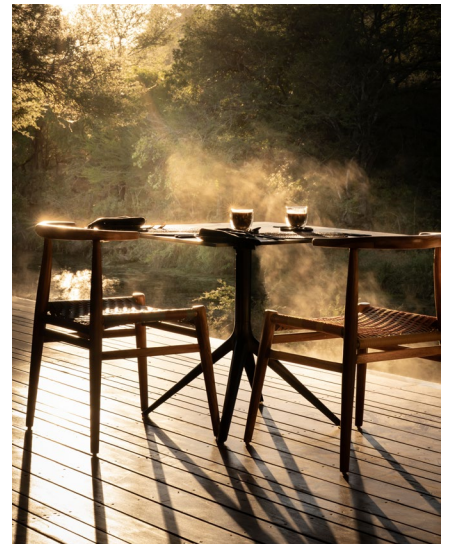
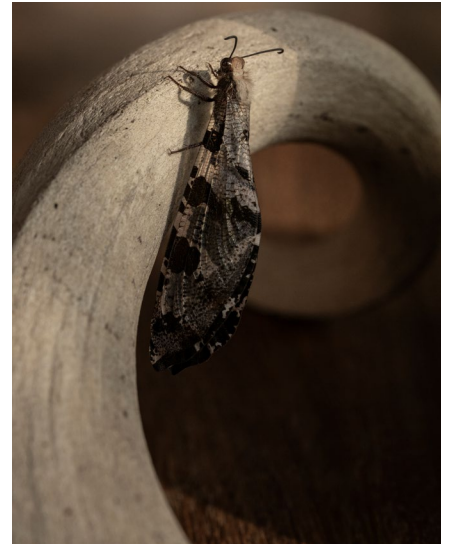
Singita

A SMOOTH JOURNEY FROM START TO FINISH

South Africa



Our Guide to the Greater Kruger Region



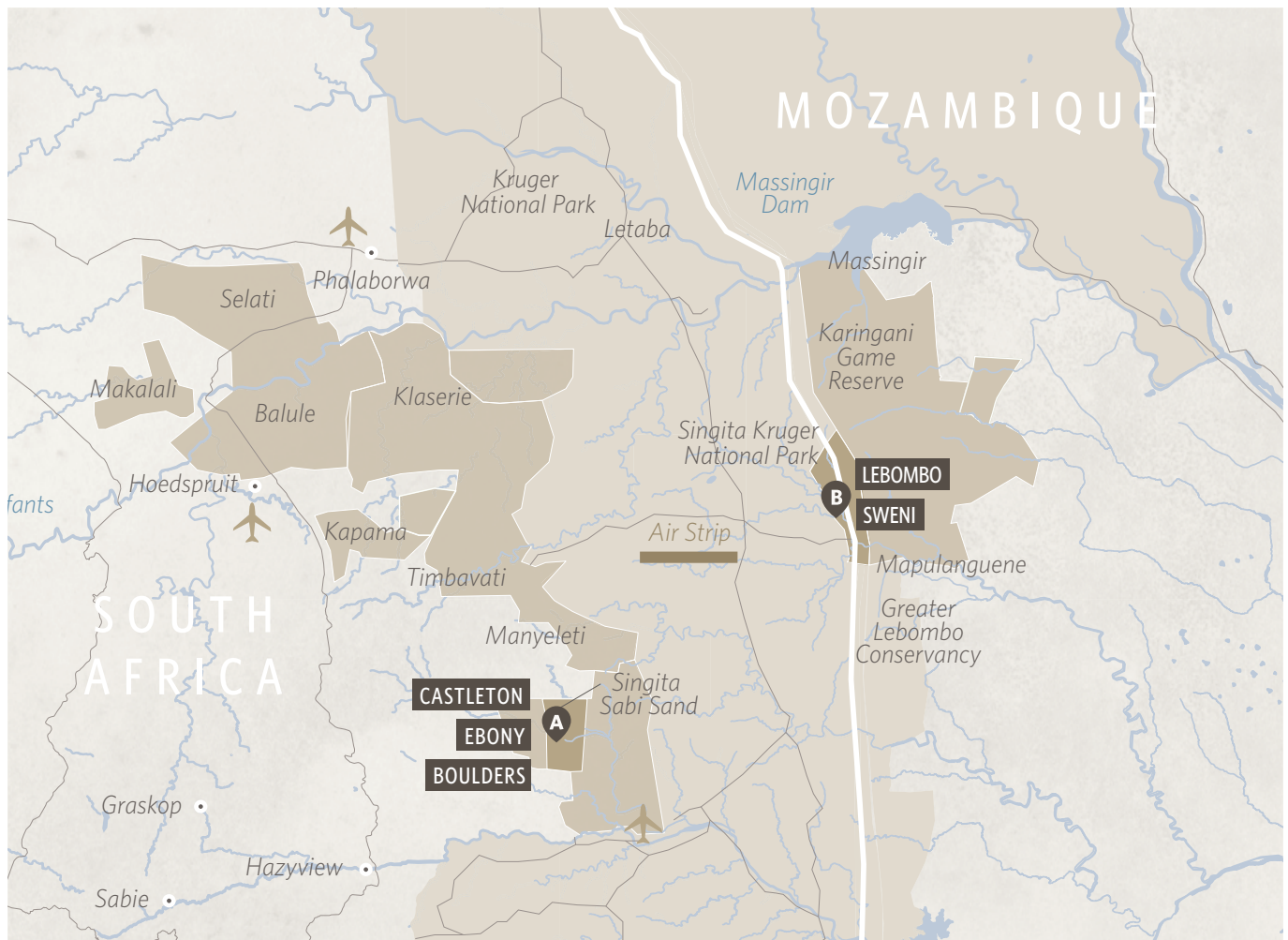
Please take the time to read this document thoroughly before embarking on your journey with us, as it contains important information about travelling to and within South Africa.

Contents

REGIONS & RESERVES	4
TRAVEL INFORMATION	5
BAGGAGE INFORMATION	6
WHAT TO PACK	7
WEATHER & SEASONS	8
WILDLIFE	9
GIVING GUIDELINES	9
UTILITIES	10



Regions & Reserves



Singita Sabi Sand (A)

This private reserve spans thousands of acres of the Greater Kruger Region. Home to Ebony — Singita's first property — Boulders, and Castleton, it boasts abundant populations of big cats and other wildlife. Each day here reveals new and unexpected wonders, as only a true wilderness can.

Singita Kruger National Park (B)

Our concession here is incredibly diverse in both landscape and biodiversity. Stretching along South Africa's border with Mozambique and encompassing Lebombo and Sweni, it reflects the natural and cultural heritage of the region, offering a deeper, more holistic experience of the wild.

Travel Information

Passports

All travellers to South Africa require a passport valid for six months from their initial date of departure. For each entry into the country, the passport must have at least two consecutive blank pages (not including the final page or endorsement pages).

You may be refused entry if these conditions are not met.

Visas

Travellers from the USA, most Commonwealth and Western European countries, and Japan don't require visas and will be issued a free entry permit on arrival, valid for up to 90 days. Travellers of other nationalities will need to obtain a visa from a South African embassy or consulate prior to their journey.

Please ensure that you check the entry requirements for the passport you will be travelling with prior to your departure.

Travel Insurance

Singita does not take on the risks and liabilities associated with travel and cannot be held liable for delays, cancellations, or trip interruptions. For these reasons, we strongly encourage you to take out sufficient travel insurance. We recommend the services of **Global Rescue**, an independent third-party service provider.

Health Requirements

MALARIA

Singita's properties in South Africa are situated in malaria-risk areas. It is therefore essential that you consult your doctor or a travel clinic regarding anti-malaria requirements prior to your journey.

YELLOW FEVER

South Africa requires a valid yellow fever certificate for all travellers journeying from or transiting through yellow fever-risk countries.

TRAVEL VACCINATIONS

Please consult your doctor or a travel clinic prior to your journey for advice on further vaccinations and recommendations.



Baggage Information

Due to the limited capacity of small aircraft, **all luggage must be in soft-sided duffel bags (one flat side will be allowed).**

MAXIMUM CHECKED LUGGAGE:

- Weight: 20 kg / 44 lbs (in the hold)
- Measurements: 40 cm (16 inches) wide x 30 cm (12 inches) high x 60 cm (24 inches) long

MAXIMUM HAND LUGGAGE:

- Weight: 5 kg / 11 lbs

PLEASE NOTE:

If your luggage exceeds the limitations stated above, it will not be loaded. A complimentary luggage storage facility is available at the Federal Air Lounge at O.R. Tambo International Airport in Johannesburg for temporarily storing larger items, provided you have booked return flights.

Please consult your travel advisor for additional options for excess luggage.



TRAVEL TIP

Taking direct routes and visiting fewer places, but staying for longer, are some ways you can reduce your travel footprint.

What to Pack

Neutral tones and light colours are best for game drives and bush walks. They allow you to blend in with your surroundings, ensure minimal disturbance to wildlife — and therefore a better, more natural viewing experience — and attract the fewest insects.

Game drives take place in the early morning and late afternoon, meaning temperatures may range from very cold to hot over the course of the day. For this reason, we recommend layering clothing.

Formalwear is not required at any of our properties, and you're welcome to attend meals straight from any experience. Laundry, including ironing, is complimentary.

TRAVEL TIP

Packing lighter helps to lower your travel footprint.

Suggested packing guide:

- Shorts, T-shirts, and summer dresses for during the day. We recommend light, natural fabrics like cotton and linen.
- Long trousers, long-sleeved vests, and a warm jacket for early mornings and evenings.
- Woollen hat/beanie, gloves, and scarves for the winter months.
- Comfortable walking shoes and socks.
- Sandals or flip-flops for during the day on property, and closed shoes or sneakers for evenings.
- Swimwear, sunglasses, and a sun hat.
- Camera equipment, binoculars, and a spare memory card. Each suite and vehicle is also equipped with a pair of binoculars for you to use.
- Spare contact lenses/glasses and contact lens solution.
- Medication (the remote nature of our properties means that anything beyond First Aid supplies won't be available on site).

Amenities provided in all Singita suites:

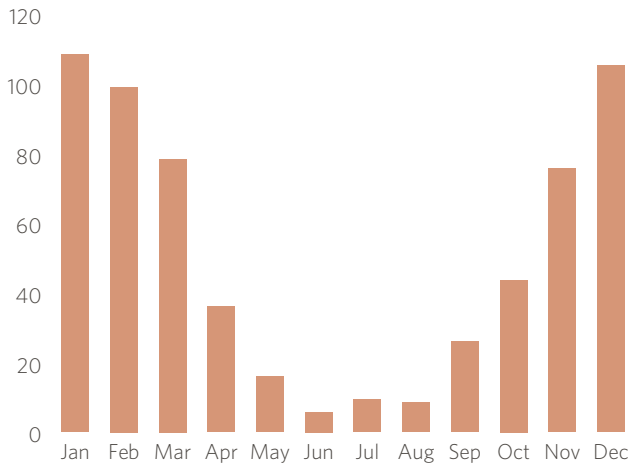
- Shampoo, conditioner, body wash and lotion
- Hairdryer
- Sunblock, lip balm, and mosquito repellent
- Sun hat
- Rain poncho
- One set of binoculars
- Reusable water bottles



Weather & Seasons

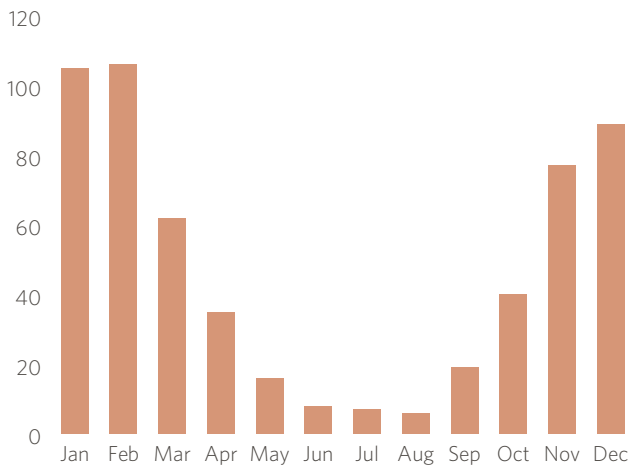
SINGITA SABI SAND

AVERAGE MONTHLY RAINFALL (MM)



SINGITA KRUGER NATIONAL PARK

AVERAGE MONTHLY RAINFALL (MM)



The Kruger National Park and Sabi Sand Game Reserve are situated in the Lowveld of northeastern South Africa, along the border with Mozambique. This region is marked by hot, wet summers and mild, dry winters. Elevation ranges from 250 to 850 metres above sea level.

Rainfall typically arrives as short, dramatic afternoon storms during the warmer, more humid months between November and March. April and May mark the shift into the dry season, when temperatures drop slightly. Between June and August, the region experiences its driest, coolest months. Mornings are crisp and cold, giving way to warm, sunny days. From September into October, temperatures start rising again ahead of the rains.

SINGITA SABI SAND AVERAGE SEASONAL TEMPERATURE RANGES

SPRING (Sept - Nov)	SUMMER (Dec - Feb)	AUTUMN (March - May)	WINTER (June - Aug)
Low 20 °C / 68 °F High 30 °C / 86 °F	Low 23 °C / 73 °F High 38 °C / 100 °F	Low 22 °C / 72 °F High 31 °C / 88 °F	Low 18 °C / 64 °F High 29 °C / 84 °F

SINGITA KRUGER NATIONAL PARK AVERAGE SEASONAL TEMPERATURE RANGES

SPRING (Sept - Nov)	SUMMER (Dec - Feb)	AUTUMN (March - May)	WINTER (June - Aug)
Low 15 °C / 59 °F High 31 °C / 89 °F	Low 22 °C / 72 °F High 35 °C / 95 °F	Low 19 °C / 66 °F High 32 °C / 90 °F	Low 8 °C / 46 °F High 28 °C / 82 °F

These temperatures are monthly averages. Actual daily temperatures and rainfall may differ.



Wildlife

You'll be briefed on specific safety precautions upon arrival at each property, but in general, please be mindful that you will be in a wilderness area. Animals roam freely, meaning you might encounter potentially dangerous species. If you do, please remain calm and follow our people's instructions. Our teams are highly trained and experienced in handling such situations. Beyond your stay at Singita, we suggest carefully evaluating whether you're visiting any captive wildlife attractions and activities. Sadly, many facilities are not true sanctuaries, nor ethical in their treatment of wildlife.

Giving Guidelines

Tipping cultures differ from country to country. While our people do not expect or rely on gratuities from guests, you may wish to leave a discretionary token of your appreciation — either cash or a nominated amount added to your bill. Tips from the general staff gratuity pool are divided equally amongst chefs, housekeepers, porters, front-of-house, and back-of-house staff. Should you wish to allocate a gratuity to a particular staff member, we ask that you please specify this.

All Singita properties accept Visa, MasterCard, and American Express.

POSITION	AMOUNT
Field guide	From USD 55 per couple per day
Tracker	From USD 55 per couple per day
Banakeli/Waiter	From USD 45 per couple per day
Wellness therapist	10% of treatment cost
General staff gratuity pool	From USD 55 per couple per day



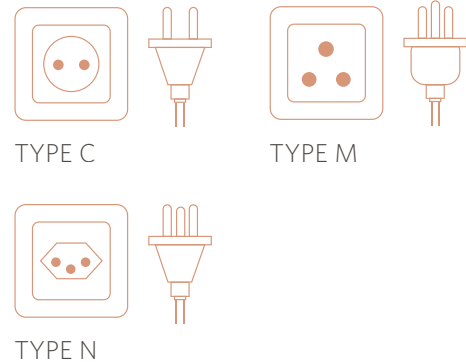
We work in partnership with the Singita Lowveld Trust to carry out vital conservation and community support initiatives across the region. Cash donations empower the Trust to expand its impact and are preferable to other goods that are more challenging to distribute fairly. Visit its website to [find out more >](#)

Utilities

Electricity

All Singita suites have multiple plug points for charging devices and accommodate EU, UK, North American, and USB connections. South Africa uses Type C, M, and N power outlets and plugs.

Most universal power plug adapters cannot connect to M sockets. However, you can purchase converters and adaptors in South Africa.



Communication & Technology

Complimentary internet access is available at all Singita properties in South Africa. However, due to their remote locations, the connection can be slow and intermittent. Mobile phone coverage is only available in certain areas.

If you do wish to be connected, please be mindful of other guests who choose to switch off. We ask that you keep your mobile phone on silent and refrain from using it around other guests in communal lodge areas and on game drives.



THE LONG RUN

Singita is a member of **The Long Run**, a global network for sustainable tourism.