



Elela

OKAVANGO DELTA, BOTSWANA

Singita

“Elela represents the realisation of a long-held vision for Singita to expand our impact into Botswana. Capturing the Delta’s endless openness, every moment here flows in step with the landscape – and you feel truly connected to it.”

- Jo Bailes, CEO





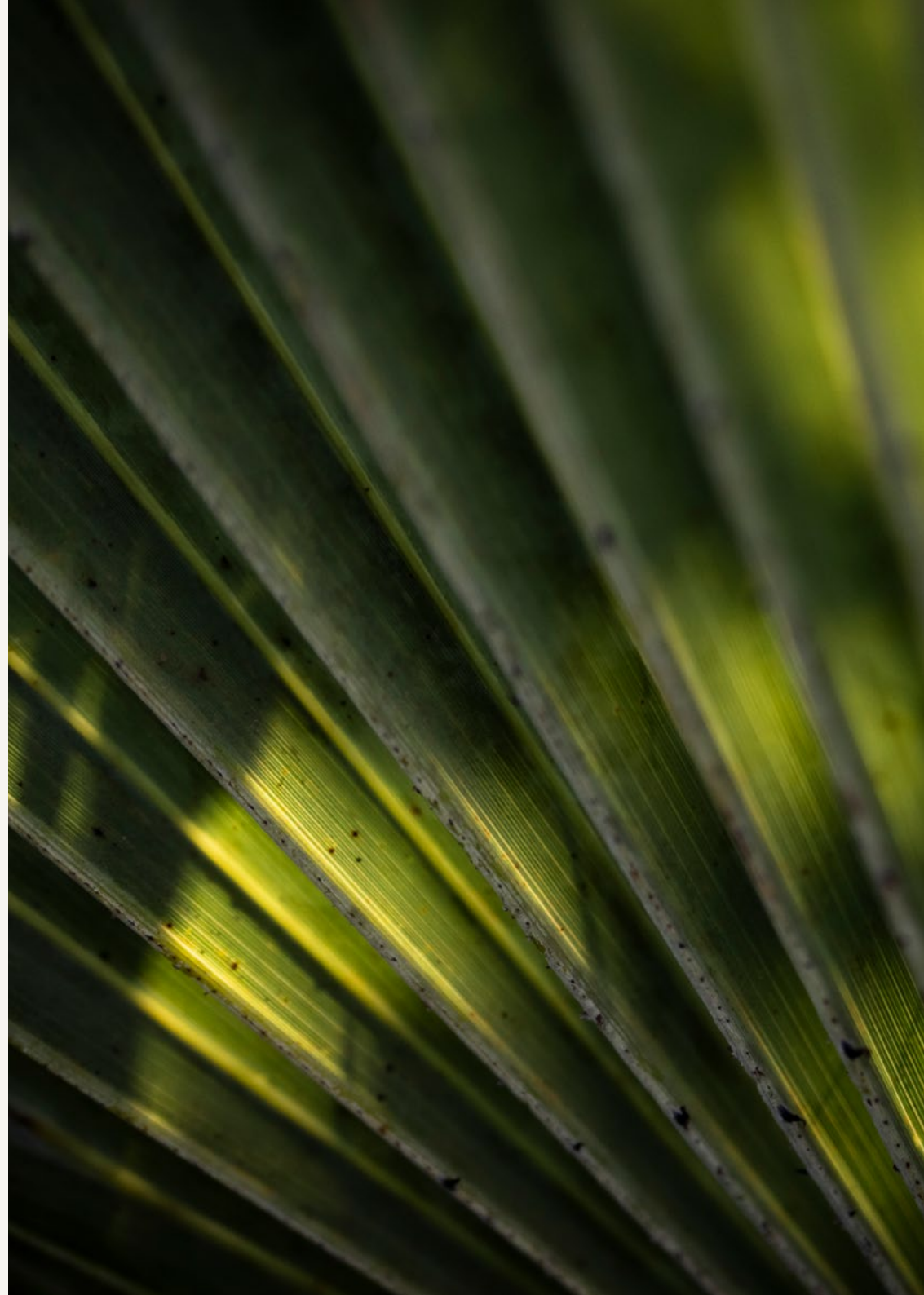


Our purpose

Singita is a leading conservation and ecotourism brand, borne of a deep love and reverence for nature. Guided by an enduring purpose to protect and preserve large areas of African wilderness for future generations, we offer unhurried journeys across some of the continent's most remote and untouched landscapes.

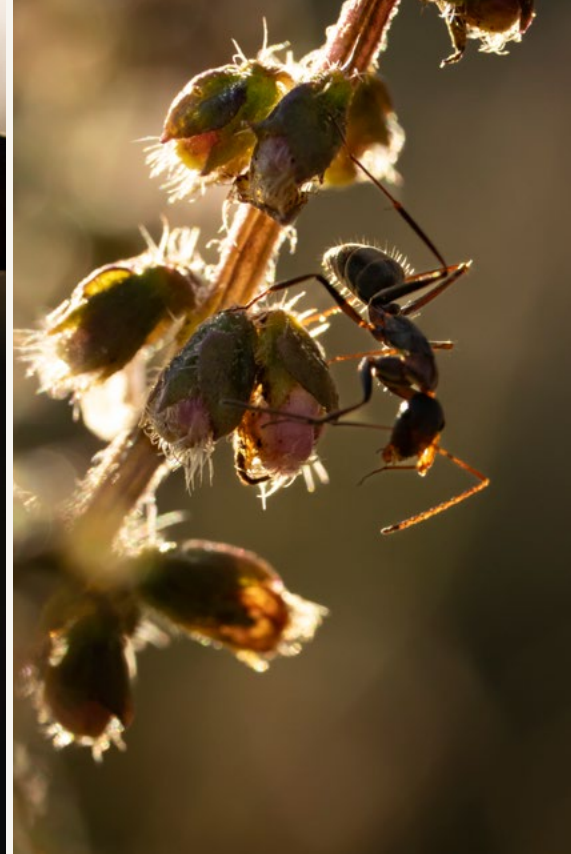
Elela

At Elela, the Delta is more than a setting — it's the experience itself. Mesh walls usher the breeze, floods pass beneath walkways, and circular camps open to the landscape on all sides. Winds change, waters swell and recede, and the sun shifts constantly, revealing a different experience in every moment. Both in the privacy of your camp and the hub at the heart of the property, there's no separation between inside and out, guest and guide, you and the wild. Here, you learn to see all that you didn't know to look for, and days take their shape from instinct.





Hear the Delta's dawn chorus.



Lodge Details

- Five one-bedroom camps.
- Two two-bedroom camps.
- One four-bedroom camp.
- Each camp is completely private, with its own vehicle, guide, tracker, Camp Manager, and arrival point. Inside, there's a living area, kitchen, and dining space to gather in. Outside, a deck, pool, and fire pit open onto the wilderness, and a dedicated lounge hosts wellness rituals.
- The four-bedroom camp includes two private vehicles, as well as a wine cellar, fitness space, and personal chef.
- The hub at the heart of the property includes a shared dining area, Conservation Lounge, Boutique & Gallery, fitness space, deli, kitchens, canteen, offices, clinic, and the regional campus of the Singita Community Culinary School. Guests are welcome to explore and engage with our people across these spaces at any time.
- Children of all ages are welcome.



Experiences

- Guided walks
- Daily drives
- Mokoro excursions (seasonal)
- Boat trips (seasonal)
- Helicopter flights
- Birdwatching
- Stargazing
- Fishing (seasonal)
- Swimming
- Conservation Lounge
- Wine tastings and pairings
- Fitness spaces
- Wellness rituals
- Yoga
- Boutique & Gallery

In the interest of safety, children's participation in wilderness experiences is at the discretion of a guide.

[Download our Delta Experiences Guide >](#)





Our location

BOTSWANA (A)

Elela is located in the central western region of Botswana's Okavango Delta. Here, nature carries on, as it always has, and our perception of time gives way to currents far greater than us: the shifting of the seasons, the flow of water, and the movement of the sun.

For more information on travelling to and within Botswana:

[Download our destination guide >](#)



OKAVANGO DELTA (B)

Shared only by our partners and us, our concession here is a true representation of the Delta ecosystem. Made up of ancient, meandering waterways that fill with the rains and recede as the seasons change, it's an ever-shifting patchwork of species-rich islands, lagoons, grasslands, and swamps. Its 420,000 acres are home to an extraordinary diversity of wildlife, and are alive with the culture and history of the people who have known it longest.

GETTING THERE

Mack Air offers daily scheduled flights from Maun to the Singita Airstrip, a 15-minute drive from Elela. Alternatively, charter flights are available through Helicopter Horizons.

South Africa

Kruger National Park:

Lebombo & Sweni

Sabi Sand:

Castleton, Boulders & Ebony

Zimbabwe

Malilangwe Wildlife Reserve:

Pamushana & Malilangwe House

Botswana

Okavango Delta:

Elela

Tanzania

Serengeti:

Sasakwa, Sabora, Faru Faru,
Serengeti House, Kilima, Milele,
Explore & Mara River Camp

Rwanda

Volcanoes National Park:

Kwitonda & Kataza House

Singita

Tel +27 21 683 3424

enquiries@singita.com

www.singita.com